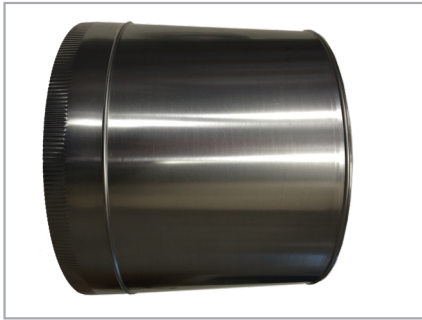
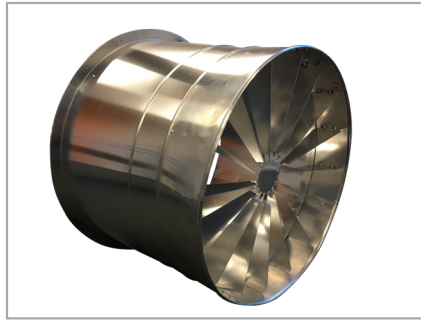


# Accessories



## Plenum

The plenum connects the fan or air handling unit with the GrowAir duct.



## Plenum with air guidance blades

The plenum with guidance blades connects the fan or air handling unit with the GrowAir duct and you will have less turbulence in the first meters.



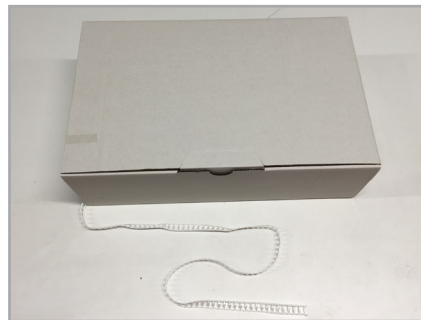
## End cap with adjustable air opening

This end cap must be installed at the end of the GrowAir duct. The adjustable holes will supply some air in the middle part and have a fixing point to adjust the duct to the gutter.



## S-Hook

To hang the GrowAir duct we supply a special suspension kit with syntactic S-hooks and Ladder string.



## Ladder string

To hang the GrowAir duct we supply a special suspension kit with Ladder string.



## Clamp - Polyester/RVS strip

To connect the GrowAir duct to the plenum/air handling unit/ventilator and end cap you will need Clamps.

## Fan

Air will be transported by a fan into a plenum and GrowAir distribution ducts with adjustable end caps.

The fan and the air distribution system must be in balance with each other to get optimal growing conditions.

