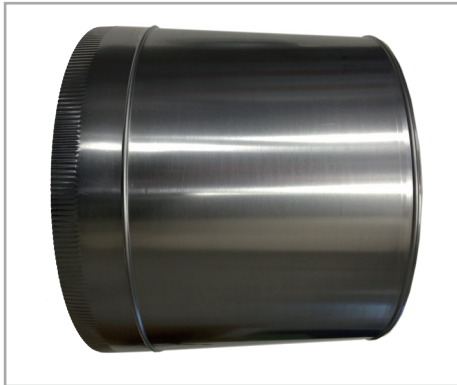


Accessories

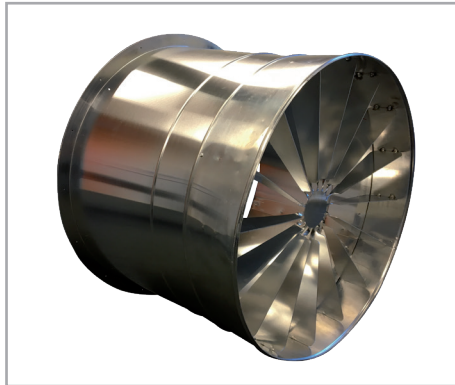


Below please find a number of accessories that you need to install your GrowAir solution.



Plenum

The plenum connects the fan or air handling unit with the GrowAir duct.



Plenum with Air guidance blades

The plenum connects the fan or air handling unit with the GrowAir duct and because of the air guidance blades you will have less turbulence in the first meters of your duct.



End cap with air opening

You need this end cap on the end of the duct as the holes will supply some air in the middle and have a fixing point to adjust the duct to the gutter in the end.



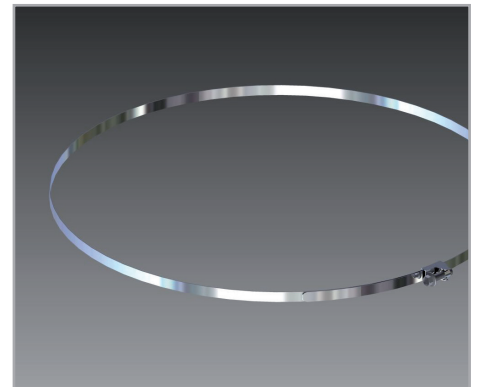
End cap with adjustable air opening

You need this end cap on the end of your duct, the adjustable holes will supply some air in the middle and have a fixing point to adjust the duct to the gutter on the end.



Suspension

To hang the duct under the gutter we supply you with a special suspension kit with syntactic hooks.



Clamps

To connect the duct to the plenum/air handling unit/ventilator and end-cap you need these specific clamps.

KE GrowAir B.V.
Edisonweg 11
3291 CK Strijen
Nederland

Tel. (+31) 078 674 8475
Fax. (+31) 078 674 8476
info@ke-growair.nl
www.ke-growair.nl

